



TOSOT





TOSOT

YOUR TRUSTED COMPANION

Let us introduce ourselves. We are TOSOT Bathica. As your trusted companion, our role is to get you comfortably, efficiently, and reliably through the tough Canadian winters and the hot summer months. To achieve this, our team worked diligently identifying and analyzing four pillars of our global value package.

THOSE FOUR PILLARS ARE:

- › 1. Reliable and efficient equipment
- › 2. Support, Training and Education
- › 3. Logistics
- › 4. Communication

BENEFITS

- › ULTRA HEAT heatpumps are our most efficient heat-pumps
- › Complete residential and light commercial line-up
- › Designed for the North American climate
- › Smart defrost, pan heaters and crankcase heaters
- › Certifications: AHRI and Energy Star

Each pillar represents several constituents that are constantly being improved to maximize value for our dealers and distribution partners. Aside from the equipment, this also sets us apart from the rest in terms of level of excellence.

In many cold-climate regions of the world, the husky represents performance and reliability in extreme conditions. Snow, our husky, represents these values and reminds you that TOSOT Bathica will be Your Trusted Companion.



TABLE OF CONTENTS

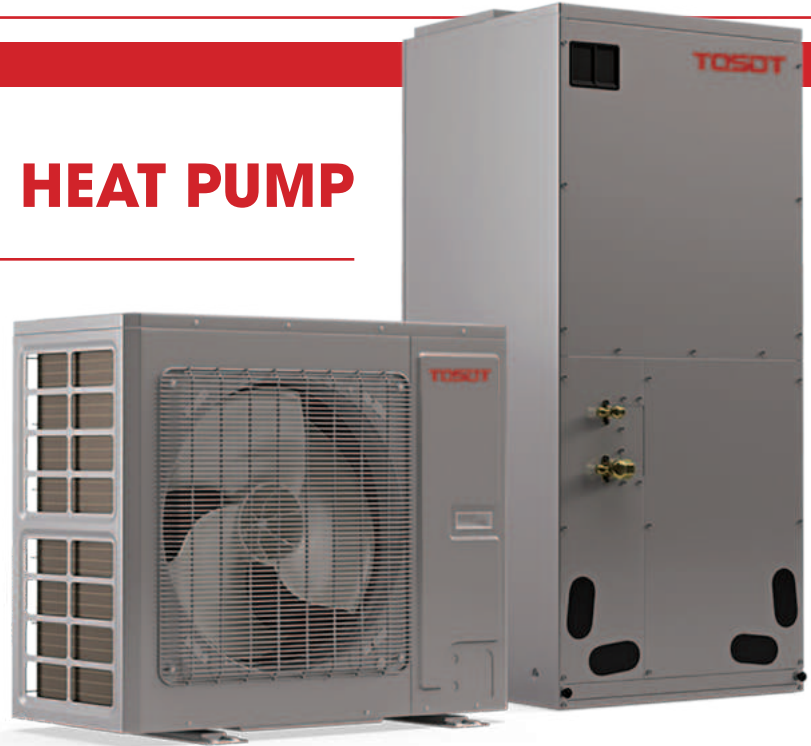
TOSOT BENEFITS.....	2
CENTRAL SYSTEMS.....	4
SINGLE ZONE SYSTEMS	5
MULTIZONE UNITS.....	9
LIGHT COMMERCIAL UNITS.....	15
PORTABLE AIR CONDITIONER	18
DEHUMIDIFIER	18
GLOSSARY	19



THE FUTURE OF THE HEAT PUMP



YOUR TRUSTED COMPANION



EXTREME CLIMATE PERFORMANCE ULTRAHEAT & ULTRACOOL TECHNOLOGY



Heating Performance*:
100% Capacity at -5°F/-20°C and 78% Capacity at -22°F/-30°C
Cooling Performance*:
100% Capacity at 115°F/46°C and 78% Capacity at 130°F/54°C
*based on 2 Ton model



THERMOSTAT COMPATIBILITY UNIVERSAL THERMOSTAT OPTIONS

Compatible with any third party thermostat including NEST®



UNIVERSAL SYSTEM INSTALL WITH ANY 3RD PARTY AIR HANDLER OR FURNACE

Replaces larger/louder outdoor unit and increase conventional heat pump performance ranges and efficiency for All-Climate applications.



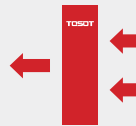
RELIABLE COMFORT INVERTER COMPRESSOR

The APEX DC Inverter moderates operating load, heating & cooling with less fluctuation for more comfortable climate control, extending component life for fewer breakdowns.



ENERGY EFFICIENT UP TO 20 SEER

The APEX DC Inverter moderates operating load, increasing efficiency for lower operating costs for both cooling and heating.



SIDE DISCHARGE NO CLOGGING/LESS SPACE

The APEX takes half the area and, unlike conventional condensers, doesn't fill up with leaves, snow and debris.



QUIET OPERATION IDEAL FOR SOUND RESTRICTIONS AND OUTDOOR PIECE OF MIND.

For every 10 Decibels (dBA) a sound is twice as loud - making the APEX Series at 55 dB(a) less than half as loud as a conventional top discharge condenser at 73 dB(a).



CORROSION RESISTANT GOLD FIN CONDENSER

Live on the coast? Don't worry, our condenser is built to resist long term corrosion.



SLIM DESIGN IDEAL FOR ZERO LOT LINES

Side discharge design takes less than half the area of conventional condensers. Perfect for city lots and between building applications where access and space is limited.

APEX CENTRAL HEAT PUMPS
20-17.5 SEER INVERTER
 24,000 BTU TO 60,000 BTU

ULTRA HEAT 



- › High And Low Pressure Protection Features
- › 24V Controls Compatibility
- › Overload Protection Features
- › Field Adjustable Capacity
- › Up to 100% Heating Capacity at -20° C/-4° F
- › Universal Indoor Unit Compatibility
- › Up to 78% Heating Capacity at -30° C/-22° F
- › Built-In Drain Pan Heater
- › Intelligent Defrost

OUTDOOR UNIT			TU36-24WADU		TU60-48WADU	
			24K	36K	48K	60K
Capacity (Min-Rated-Max)	Cooling	BTU/h	12,000-24,000-24,000	18,000-36,000-37,000	34,000-48,000-48,000	35,000-54,000-54,000
	Heating	BTU/h	12,000-24,000-30,000	18,000-36,000-38,000	34,000-48,000-52,000	35,000-48,000-52,000
SEER			20	18	18	17
EER		(BTU/h)/w	12.5	11	11	10.5
HSPF/COP			10		10.5	9
Refrigerant Charge		oz	148		220.5	
Piping Connection	Liquid	in.	Φ 3/8		Φ 3/8	
	Gas	in.	Φ 3/4		Φ 3/4	
Max total piping		ft.	100		100	
Max. Elevation		ft.	50		50	
Sound Pressure Level		dB(A)	52/55		58/60	
Net Weight		lb	217		308	
Power Supply			208-230V/60Hz		208-230V/60Hz	
Wire Size			AWG 18/5		AWG 18/5	
MOP/MCA		A	35/24		45/35	
Cooling Rated Amps		A	21		30	
Heating Rated Amps		A	25		31	
Compressor Type			Inverter Rotary		Inverter Rotary	
Dimensions (W x H x D)		in.	37 x 32 1/4 x 19 1/8		42 3/4 x 53 5/8 x 16 7/8	

AIR HANDLER			TUD24-24AH2ADU	TUD36-24AH2ADU	TUD48-24AH2ADU	TUD60-24AH2ADU
Cooling Capacity		BTU/h	24,000	36,000	48,000	54,000
Heating Capacity		BTU/h	24,000	36,000	48,000	60,000
Power Supply		V/Ph/Hz	208/230V~1~60Hz	208/230V~1~60Hz	208/230V~1~60Hz	208/230V~1~60Hz
Power Consumption		W	273	373	746	746
Airflow		PCM/CFM	960	1,000	1,380	1,600
ESP		in. W.G.	1.0	1.0	1.0	1.0
Sound Pressure Level		dB(A)	45	47	50	51
Piping Connection	Liquid	in.	Φ 3/8	Φ 3/8	Φ 3/8	Φ 3/8
	Gas	in.	Φ 3/4	Φ 3/4	Φ 3/4	Φ 3/4
Dimensions (W x H x D)		in.	21 1/4 x 48 1/4 x 21 1/4	21 1/4 x 48 1/4 x 21 1/4	24 3/4 x 57 x 24 1/4	24 3/4 x 57 x 24 1/4
Net Weight		lb	156	156	202	202

19.5-17 SEER INVERTER

24,000 BTU TO 60,000 BTU



CASED "A" COILS



General Features

- › Built-In TXV with check valve
- › Ideal for Dual Fuel applications
- › Universal mounting orientation
- › Pre-charged with 9oz. R410A
- › Flared service valve connections

COIL MODEL			TCAT24F/NaA	TCAT36F/NaA	TCAT48H/NaA	TCAT60H/NaA
OUTDOOR UNIT MODEL		TOSOT APEX	TUD36-24AH2ADU	TUD36-24AH2ADU	TUD60-24AH2ADU	TUD60-24AH2ADU
Rated Furnace Airflow		CFM	800	1000	1230	1510
Rated Blower Power		W	145	185	280	390
Capacity		Btu/h	24000	36000	48000	54000
EER	Cooling	Btu/(h·W)	12.5	12.2	11.7	11.7
SEER	Cooling	Btu/(h·W)	19.5	18	18	17
Pipe Size	Liquid	inch	3/8	3/8	3/8	3/8
	Gas	inch	3/4	3/4	3/4	3/4
Net Weight		lbs	64	64	95	95
Gross Weight		lbs	75	75	110	110
Loading Qty	40" GP	set	219	219	102	102
	40" HP	set	292	292	153	153

Note: The above performance data is tested at the "Rated Conditions" shown in the table



SINGLE-ZONE LOMOPLUS HEAT PUMPS
38-21.5 SEER INVERTER
 9,000 BTU TO 24,000 BTU

ULTRA HEAT 

OUR MOST EFFICIENT HEAT PUMP



"I feel"



THERMOSTAT
 (Optional)
 XE71



- > Superheat (2 stages)
- > Wi-Fi ready
- > LED display
- > 80% heating capacity at -30° C/-22° F
- > 100% heating capacity at -20° C/-4° F
- > Low ambient cooling at -15° C/5° F

- > Optional wall thermostat
- > Also available in Multi-Zone
- > Rebates available with every utility company in North America
- > Built-In Drain Pan Heater

MODEL		TW09HQ3D6D	TW12HQ3D6D	TW18HQ3D6D	TW24HQ3D6D	TW36HQ3B2D*
Power Supply		208-230V, 60Hz, 1Ph	208-230V, 60Hz, 1Ph	208-230V, 60Hz, 1Ph	208-230V, 60Hz, 1Ph	208-230V, 60Hz, 1Ph
Rated Current Cooling	A	6.2	6.5	10.8	16.4	14.7
Rated Current Heating	A	6.9	6.9	10.8	16.4	14.6
SYSTEM PERFORMANCE						
Dehumidification	l/h	0.8	1.4	1.8	2.46	3.5
Cooling Capacity	BTU/h	9,000 (1,535 - 12,996)	12,000 (2,900 - 15,354)	18,000 (4,094 - 21,837)	22,000 (6,800 - 30,700)	33,000 (8,800-40,900)
Heating Capacity	BTU/h	9,000 (2,388 - 13,648)	12,200 (3,071 - 18,766)	18,000 (4,094 - 24,566)	24,000 (6,800 - 32,000)	34,600 (16,700-49,400)
SEER/EER		38/16.50	30.5/15.30	24.5/13.53	21.5/13.00	23
HSPF/COP		15/4.40	14/3.80	12/3.50	12/3.5	10.5
INDOOR UNIT						
Airflow (L/H)	PCM/CFM	206/424	235/500	353/736	383/824	441/824
Sound Pressure Level (L/H)	dB(A)	19/43	22/49	34/51	34/52	36/55
Unit Dimensions (WxHxD)	in.	39.2 x 11.8 x 8.8	39.2 x 11.8 x 8.8	43.3 x 12.8 x 9.8	43.3 x 12.8 x 9.8	53.1 x 12.8 x 10
Net/Gross Weight	lb	29.8/36.4	29.8/36.4	36.4/44.1	36.4/43	42/50
OUTDOOR UNIT						
Compressor Type		ROTARY	ROTARY	ROTARY	ROTARY	ROTARY
Sound Pressure Level	dB(A)	53	53	59	59	63
Unit Dimensions (WxHxD)	in.	35.3 x 23.4 x 14.8	35.3 x 23.4 x 14.8	38.5 x 31.1 x 16.8	38.5 x 31.1 x 16.8	43.5 x 43.5 x 17.3
Net/Gross Weight	lb	99.2/105.8	99.2/105.8	141.1/152.1	147.7/158.8	254/274
Refrigerant/Charge	oz.	R410A/45.9	R410A/49.4	R410A/74.1	R410A/81.1	R410A/123.5
Line Set Size (Liquid - Gas)	in.	1/4" - 1/2"	1/4" - 1/2"	1/4" - 5/8"	1/4" - 5/8"	1/4" - 5/8"
Max. Pipe Length	ft.	98.4	98.4	131.2	164	165
Max. Elevation	ft.	49.2	49.2	65.6	98.4	100
MCA	A	9	9	22	22	32
MOCP	A	15	15	30	35	50
Wire Size/# Wires		14 AWG*4 Stranded, unshielded				14/4

*Wifi optional, commercial series.

SINGLE-ZONE LOMO23 HEAT PUMPS
23-20 SEER INVERTER

9,000 BTU TO 36,000 BTU



THERMOSTAT
(Optional)
XE71

Wi-Fi MODULE AVAILABLE
TL127000600_L72279



- > LED display
- > Heating down to -25° C/-13° F
- > Low ambient cooling at -15° C/5° F
- > Optional wall thermostat

- > Also available in Multi-Zone
- > Rebates available with almost every utility company in North America
- > Built-In Drain Pan Heater

MODEL		TW09HQ2C2D	TW12HQ2C2D	TW18HQ2C2D	TW24HQ2C2D	TW30HQ2B2D	TW36HQ2B2D
Power Supply		208-230V, 60Hz, 1Ph	208-230V, 60Hz, 1Ph	208-230V, 60Hz, 1Ph	208-230V, 60Hz, 1Ph	208-230V, 60Hz, 1Ph	208-230V, 60Hz, 1Ph
Rated Current Cooling	A	5.8	6.0	10.4	14.5	17.0	20.0
Rated Current Heating	A	6.0	6.3	12.6	14.5	17.5	20.0
SYSTEM PERFORMANCE							
Dehumidification	pt/h	0.8	1.4	1.8	2.0	3.0	3.5
Cooling Capacity	BTU/h	9,000	12,000	18,000	22,000	28,000	33,600
		(3,100 - 9,600)	(3,100 - 13,000)	(6,800 - 20,000)	(8,820 - 27,000)	(9,490 - 30,030)	(7,400 - 36,000)
Heating Capacity	BTU/h	11,000	13,000	19,800	23,000	28,400	34,600
		(1,911 - 12,000)	(2,400 - 14,000)	(7,340 - 23,500)	(8,820 - 30,710)	(10,000 - 32,990)	(14,980 - 36,000)
SEER		23/14.29	22/12.50	20/12.50	20/12.50	18/10.40	18/8.20
HSPF/COP		10.5/3.16	11.0/3.46	10.0/3.35	10/3.37	9/3.0	9/2.7
INDOOR UNIT		TW09HQ2C2D-I	TW12HQ2C2D-I	TW18HQ2C2D-I	TW24HQ2C2D-I	TW30HQ2B2D-I	TW36HQ2B2D-I
Airflow (L/H)	PCM/CFM	171/377	171/400	335/559	530/706	412/706	412/736
Sound Pressure Level (L/H)	dB(A)	29/43	29/45	39/47	36/48	37/51	37/54
Unit Dim. (WxHxD)	in.	33.4 x 11.4 x 8.2	33.4 x 11.4 x 8.2	38.2 x 11.8 x 8.8	42.4 x 12.8 x 9.7	53.1 x 12.8 x 10	53.1 x 12.8 x 10
Net/Gross Weight	lb	22.1/26.5	22.1/26.5	27.6/34.2	34.2/41.9	41.9/51.8	41.9/51.8
OUTDOOR UNIT		TW09HQ2C2D-O	TW12HQ2C2D-O	TW18HQ2C2D-O	TW24HQ2C2D-O	TW30HQ2B2D-O	TW36HQ2B2D-O
Compressor Type		SWING	SWING	ROTARY	ROTARY	ROTARY	ROTARY
Sound Pressure Level	dB(A)	53	54	55	59	62	65
Unit Dim. (WxHxD)	in.	33.4 x 21.3 x 12.6	33.4 x 23.6 x 12.6	37.6 x 27.6 x 12.6	38.6 x 31.1 x 16.8	38.6 x 31.1 x 16.8	38.6 x 31.1 x 16.9
Net/Gross Weight	lb	78/84	86/93	105/115	142/153	154/165	161/172
Refrigerant/Charge	oz.	R410A/45.9	R410A/47.6	R410A/56.4	R410A/77.6	R410A/84.6	R410A/91.7
Line Set Size (Liquid - Gas)	in.	1/4" - 3/8"	1/4" - 1/2"	1/4" - 5/8"	1/4" - 5/8"	1/4" - 5/8"	1/4" - 5/8"
Max. Pipe Length	ft.	49.2	65.6	82	82	98.4	98.4
Max. Elevation	ft.	49	49	49	49	49	49
MCA	A	9	9	16	20	20	24
MOCP	A	15	15	25	30	30	40

Wire Size/# Wires

14 AWG*4 Stranded, unshielded

17 SEER INVERTER

9,000 BTU TO 24,000 BTU



THERMOSTAT
(Optional)
XE71



VOTRE PARTENAIRE
DE CONFIANCE

SINGLE-ZONE LOMO 17 HEAT PUMPS

- > LED Display
- > Low Ambient Heating down to -20° C/-4° F
- > Low Ambient Cooling down to -18° C/0° F

SINGLE-ZONE LOMO 16 HEAT PUMPS

- > LED display
- > Heating down to -20° C/-4° F
- > Low ambient cooling at -15° C/5° F
- > Optional wall thermostat
- > Built-In Drain Pan Heater

LOMO 17

MODEL	UNITS	TW09HQ1B2D	TW12HQ1B2D	TW18HQ1B2D	TW24HQ1B2D
Power Supply		208-230V, 60Hz, 1Ph	208-230V, 60Hz, 1Ph	208-230V, 60Hz, 1Ph	208-230V, 60Hz, 1Ph
Rated Current Cooling	A	4,3	5,6	9	8,5
Rated Current Heating	A	3,8	5,1	7,8	8,5
SYSTEM PERFORMANCE					
Dehumidification	pt/h	1,6	2,9	3,8	4,23
Cooling Capacity	BTU/h	2,457 (9,100-9,600)	3,494 (12,000-12,624)	4,094 (17,400-20,000)	5,900 (22,000-25,200)
Heating Capacity	BTU/h	2,457 (9,500-11,500)	2,388 (13,000-13,648)	4,100 (18,000-21,000)	4,500 (24,000-25,900)
SEER		17	17	16	19
HSPF/COP		9	9	9	10

LOMO 16 115V

MODEL	UNITS	TW09HQ1B8A	TW12HQ1B8A
Power Supply		115V, 60Hz, 1Ph	115V, 60Hz, 1Ph
Rated Current Cooling	A		
Rated Current Heating	A		
SYSTEM PERFORMANCE			
Dehumidification	pt/h	0,8	1,4
Cooling Capacity	BTU/h	9,000 (2,764 - 10,918)	12,000 (3,753 - 12,500)
Heating Capacity	BTU/h	9,500 (2,081 - 12,283)	13,000 (3,412 - 15,013)
SEER		16/9.55	16/10.55
HSPF/COP		9.0/3.3	9.0/3.1

INDOOR UNIT

		TW09HQ1B8A-I	TW12HQ1B8A-I
Airflow (L/H)	PCM/CFM	182/294	182/371
Sound Pressure Level (L/H)	dB(A)	26/39	28/42
Unit Dim. (WxHxD)	in.	31.1 x 10.8 x 7.9	33.3 x 11.4 x 8.2
Net/Gross Weight	lb	19.8/24.3	22/26.5

OUTDOOR UNIT

		TW09HQ1B8A-O	TW12HQ1B8A-O
Compressor Type		Rotary	Rotary
Sound Pressure Level	dB(A)	50	50
Unit Dim. (WxHxD)	in.	30.8 x 21.3 x 12.6	30.8 x 21.3 x 12.6
Net/Gross Weight	lb	58.4/63.9	62.8/68.4
Refrigerant/Charge	oz.	R410A/24	R410A/28.2

		TW09HQ1B8A-O	TW12HQ1B8A-O
Line Set Size (Liquid - Gas)	in.	1/4" - 3/8"	1/4" - 3/8"
Max. Pipe Length	ft.	50	66
Max. Elevation	ft.	33	33
MCA	A	10	9
MOCP	A	15	15
Wire Size/# Wires		14 AWG*4 Stranded, unshielded	

SEER 23

18,000 BTU TO 42,000 BTU

MULTI ZONE
HEAT PUMPS

OUTDOOR
UNITS

ULTRA HEAT



- › Heating down to -30° C / -22° F
- › Built-In Drain Pan Heater



**YOUR TRUSTED
COMPANION**



MODEL			TM18H5-O	TM24H5-O	TM36H5-O	TM42H5-O
Number of ports			2 ports	3 ports	4 ports	5 ports
Capacity	Cooling	BTU/h	18,000 (6,998 - 21,000)	22,000 (7,500 - 33,000)	36,000 (8,871 - 42,650)	42,000 (8,871 - 42,991)
	Heating	BTU/h	21,000 (7,000 - 26,000)	26,000 (7,650 - 31,000)	36,000 (8,871 - 42,514)	42,000 (8,871 - 46,062)
SEER			23	23	23	23
HSPF/COP			10.5/3.6	10.5/3.66	10/3.21	10/3.42
Power Supply			208-230V/60Hz	208-230V/60Hz	208-230V/60Hz	208-230V/60Hz
Airflow		PCM/CFM	2,530	2,530	3,060	3,060
Operating Range	Cooling	°C	-18 ~ 48	-18 ~ 48	-18 ~ 46	-18 ~ 48
		°F	0 ~ 118	0 ~ 118	0 ~ 115	0 ~ 118
	Heating	°C	-35 ~ 24	-35 ~ 24	-35 ~ 24	-35 ~ 24
		°F	-31 ~ 75	-31 ~ 75	-31 ~ 75	-31 ~ 75
Sound Pressure Level		dB(A)	58	60	62	62
Piping Connection	Liquid	in.	2 x 1/4	3 x 1/4	4 x 1/4	5 x 1/4
	Gaz	in.	2 x 3/8	3 x 3/8	4 x 3/8	5 x 3/8
Dimensions (W x H x D)		in.	36.22 x 31.1 x 15	36.2 x 31.1 x 14.6	40 x 43.5 x 17.3	40 x 43.5 x 17.3
Net Weight		lb	172	174	280	282
Max. Total Piping		ft.	164	229.6	246.0	246.0
Max. Single Distance		ft.	82	82	82	82.0
Max. Elevation		ft.	26	26	49.2	49.2
Refrigerant Charge		lb	4.85	6	10	11
MOP/MCA		A	35/23	40/23	60/36	60/38

OUTDOOR UNITS

MULTI ZONE HEAT PUMPS

22-20.5 SEER

18,000 BTU TO 56,000 BTU



› Heating down to -20° C/-5° F



**YOUR TRUSTED
COMPANION**



Branch box(es) and
wye joint(s) required
(sold separately)

MODEL			TM18H4-O	TM24H4-O	TM30H4-O	TM36H4-O	TM42H3-O	TM48H2-O	TM56H2-O
Number of ports			2 ports	3 ports	4 ports	5 ports	5 ports	8 ports	9 ports
Capacity	Cooling	BTU/h	18,000 (6,998 - 21,000)	24,000 (7,500 - 33,000)	28,400 (8,188 - 33,438)	34,000 (8,871 - 35,826)	39,000 (8,871 - 40,944)	48,000 (3,410 - 54,590)	53,000 (3,410 - 61,420)
	Heating	BTU/h	19,000 (7,000 - 22,600)	26,000 (7,500 - 27,978)	30,000 (8,189 - 32,414)	42,500 (8,871 - 44,356)	45,000 (8,871 - 46,062)	54,500 (4,090 - 58,000)	61,500 (4,090 - 63,120)
SEER			22	21	21	21	21	16	16
HSPF/COP			10.5/3.66	10.5/3.72	10.5/3.74	10.5/3.70	10.2/3.61	8.20	8.20
Power Supply			208-230V, 60Hz, 1Ph	208-230V, 60Hz, 1Ph	208-230V, 60Hz, 1Ph	208-230V, 60Hz, 1Ph	208-230V, 60Hz, 1Ph	208-230V, 60Hz, 1Ph	208-230V, 60Hz, 1Ph
Airflow		PCM/ CFM	1,883	2,354	2,354	4,531	4,531	3,766.40	4,119.50
Operating Range	Cooling	°C	-18 ~ 48	-18 ~ 48	-18 ~ 48	-18 ~ 48	-18 ~ 48	-5 ~ 43	-5 ~ 43
		°F	0 ~ 118	0 ~ 118	0 ~ 118	0 ~ 118	0 ~ 118	23 ~ 109	23 ~ 109
	Heating	°C	-20 ~ 24	-20 ~ 24	-20 ~ 30	-20 ~ 30	-20 ~ 30	-20 ~ 20	-20 ~ 20
		°F	-5 ~ 75	-5 ~ 75	-5 ~ 86	-5 ~ 86	-5 ~ 86	-5 ~ 68	-5 ~ 68
Sound Pressure Level		dB(A)	56	58	59	61	61	65	67
Piping Connection	Liquid	in.	2 x 1/4	3 x 1/4	4 x 1/4	5 x 1/4	5 x 1/4	3/8	3/8
	Gas	in.	2 x 3/8	3 x 3/8	4 x 3/8	5 x 3/8	5 x 3/8	5/8	5/8
Dimensions (W x H x D)		in.	37.6 x 27.5 x 15.6	38.6 x 31.1 x 16.8	38.6 x 31.1 x 16.8	42.8 x 43.4 x 17.3	42.8 x 43.4 x 17.3	53.14 x 35.44 x13.39	53.14 x 35.44 x13.39
Net/Gross Weight		lb	114.4/125	152.9/164.2	154.0/169	198.0/216	198.4/216	255.74	255.74
Max. Total Piping		ft.	65.6	196.8	229.6	246.0	246.0	443	476
Max. Single Distance		ft.	49	65.6	82.0	82.0	82.0	180	180
Max. Elevation		ft.	49	49	49.2	49.2	49.2	98	98
Refrigerant Charge		lb	3.5	4.8	6.2	8.0	8.0	25	25
MOCP		A	25	30	30	35	40	30	30

EASY INSTALLATION

WALLMOUNT

9,000 BTU TO 24,000 BTU

MULTI ZONE
HEAT PUMPS

INDOOR
UNITS



THERMOSTAT
(Optional)
XE71

› Optional wall thermostat



- › LED display
- › Wireless remote included

- › Rebates available with every utility company in North America
- › Optional Wifi

MODEL		TW09HQ2C2D-I	TW12HQ2C2D-I	TW18HQ2C2D-I	TW24HQ2C2D-I
Cooling/Heating Capacity	BTU/h	9,000/11,000	12,000/13,000	18,000/19,800	22,000/23,000
Sound Pressure Level (L/H)	dB(A)	29/43	29/45	39/47	36/48
Dehumidification	l/h	0.8	1.4	1.8	2.0
Airflow (L/H)	PCM/CFM	171/377	171/400	335/559	530/706
Dimensions (W x H x D)	in.	33.4 x 11.4 x 8.2	33.4 x 11.4 x 8.2	38.2 x 11.8 x 8.8	42.4 x 12.8 x 9.7
Net/Gross Weight	lb	22.1/26.5	22.1/26.5	27.6/34.2	34.2/41.9
Piping Connection	Liquid	in. 1/4	in. 1/4	in. 1/4	in. 1/4
	Gas	in. 3/8	in. 1/2	in. 5/8	in. 5/8

FLOOR WARMING FUNCTION

CONSOLE

9,000 BTU TO 18,000 BTU



- › LED display
- › Wireless remote included
- › Rebates available with every utility company in North America

MODEL		TM09HED-I	TM12HED-I	TM18HED-I
Cooling/Heating Capacity	BTU/h	9,000/9,500	12,000/13,000	18,089/19,795
Sound Pressure Level (L/H)	dB(A)	25/40	27/43	32/48
Dehumidification	l/h	0.8	1.4	1.8
Airflow (L/H)	PCM/CFM	188/382	206/441	220/465
Dimensions (W x H x D)	in.	27.6 x 23.6 x 8.5	27.6 x 23.6 x 8.5	27.6 x 23.6 x 8.5
Net/Gross Weight	lb	33.1/39.7	33.1/39.7	33.1/39.7
Piping Connection	Liquid	in. 1/4	in. 1/4	in. 1/4
	Gas	in. 3/8	in. 3/8	in. 1/2

INDOOR UNITS

MULTI ZONE HEAT PUMPS

WIDE AIR DISCHARGE FLOOR-CEILING

9,000 BTU TO 24,000 BTU



- > LED display
- > Rebates available with every utility company in North America
- > Wired controller + Wireless remote



MODEL		TM09HTD-I	TM12HTD-I	TM18HTD-I	TM24HTD-I
Cooling/Heating Capacity	BTU/h	8,500/9,500	11,900/13,100	17,000/18,700	22,800/27,400
Sound Pressure Level (L/H)	dB(A)	36/40	36/40	40/45	44/48
Dehumidification	l/h	0.8	1.4	1.8	2.5
Airflow (L/H)	PCM/CFM	265/383	265/383	294/559	412/736
Dimensions (W x H x D)	in.	48.0 x 27.6 x 8.9	48.0 x 27.6 x 8.9	48.0 x 27.6 x 8.9	48.0 x 27.6 x 8.9
Net/Gross Weight	lb	88.1/110.2	88.1/110.2	88.1/110.2	99.2/119
Piping Connection	Liquid	in.	1/4	1/4	3/8
	Gas	in.	3/8	3/8	5/8

INDOOR UNITS

MULTI ZONE HEAT PUMPS

BREEZE FREE DISCHARGE CASSETTE

12,000 BTU TO 24,000 BTU



- > Internal condensate pump
- > Wired controller & wireless remote
- > Internal condensate pump



MODEL		TM12HBKD-I	TM18HBKD-I	TM24HBKD-I	
Cooling/Heating Capacity	BTU/h	12,000/13,000	15,354/17,000	22,800/27,400	
Sound Pressure Level (L/H)	dB(A)	42/46	42/46	35/39	
Dehumidification	l/h	1.8	2.5	2.8	
Airflow (L/H)	PCM/CFM	265/353	265/353	500/694	
Dimensions (W x H x D)	Corps	in.	23.24 x 9.5 x 23.5	23.25 x 9.5 x 23.5	33.1 x 9.5 x 33.1
	Panneau	in..	25.5 x 1.9 x 25.5	25.5 x 1.9 x 25.5	37.4 x 2.3 x 37.4
Net/Gross Weight	lb	39.6/51	39.6/51	62/78	
Piping Connection	Liquid	in.	1/4	1/4	3/8
	Gas	in.	3/8	1/2	5/8

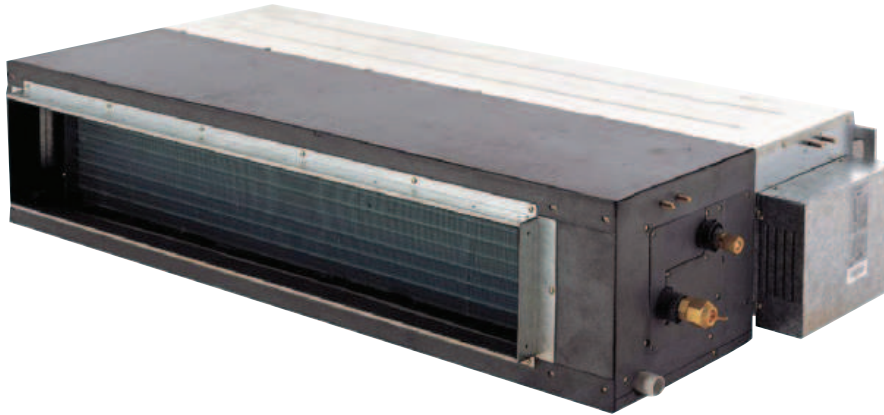
POWERFUL & CONCEALED

SLIMDUCT

9,000 BTU TO 24,000 BTU

MULTI ZONE
HEAT PUMPS

INDOOR
UNITS



**THERMOSTAT
XK19**



- > LED display
- > Wall thermostat & wireless remote included
- > Internal condensate pump

LOW STATIC

MODEL		TM09HFD-I	TM12HFD-I	TM18HFD-I	TM24HFD-I
Cooling/Heating Capacity	BTU/h	8,500/9,500	11,900/13,100	15,300/18,700	23,800/27,400
Sound Pressure Level (L/H)	dB(A)	31/37	32/39	33/41	34/42
Dehumidification	l/h	0.8	1.4	1.8	2.5
Airflow (L/H)	PCM/CFM	147/265	176/324	294/412	324/588
Dimensions (W x H x D)	in.	27.6 x 7.9 x 24.2	27.6 x 7.9 x 24.2	35.4 x 7.9 x 24.2	43.3 x 7.9 x 24.2
Net/Gross Weight	lb	48.5/60	50.7/64	59.5/79	68.3/90
Piping Connection	Liquid	in.	1/4	1/4	3/8
	Gas	in.	3/8	3/8	5/8
PSE/ESP	in. WG	.025/.04	.030/.040	.032/.040	.035/.040

HIGH STATIC

MODEL		TMHS09HFD-I	TMHS12HFD-I	TMHS18HFD-I	TMHS24HFD-I
Cooling/Heating Capacity	BTU/h	9,000 /9,500	12,000/13,000	18,000/19,000	24,000/27,000
Sound Pressure Level (L/H)	dB(A)	25/46	26/48	26/49	28/52
Dehumidification	l/h	0.8	1.4	1.8	2.5
Airflow (L/H)	PCM/CFM	188/324	212/353	288/589	406/736
Dimensions (W x H x D)	in.	32.5 x 11.75 x 29.75	32.5 x 11.75 x 29.75	44.5 x 11.75 x 29.75	44.5 x 11.75 x 29.75
Net/Gross Weight	lb	71/80	71/80	93/100	93/100
Piping Connection	Liquid	in.	1/4	1/4	3/8
	Gas	in.	3/8	1/2	5/8
PSE/ESP	in. WG	0.6	0.6	0.8	0.8
Drain Line		1"	1"	1"	1"

TM SERIES MULTI ZONE

Multi-Zone split systems are designed to provide comfort, uncompromising personal style, quiet operation and installation flexibility. Simply choose the type of indoor unit and capacity for each room, and then select your system from our matching outdoor/indoor unit combinations chart (below). For a complete list of matching combinations and capacities, please refer to www.tosotamerica.com or check with your TOSOT dealer/installer.



MODEL TM18H4-O & TM18H5-O

5 COMBINATIONS

1 UNIT

9
12

2 UNITS

9+9
9+12
12+12

MODEL TM30H4-O

16 COMBINATIONS

2 UNITS

9+9 9+12
9+18 12+12
12+18 18+18

3 UNITS

9+9+9 9+9+12 9+9+18
9+12+12 9+12+18 12+12+12
12+12+18

4 UNITS

9+9+9+9 9+9+9+12

MODEL TM24H4-O & TM24H5-O

11 COMBINATIONS

2 UNITS

9+9 9+12
9+18 12+12
12+18 18+18

3 UNITS

9+9+9 9+12+12
9+9+12 9+9+18
12+12+12

MODEL TM36H5-O

34 COMBINATIONS

2 UNITS

9+9 12+18
9+12 12+24
9+18 18+18
9+24 18+24
12+12 24+24

3 UNITS

9+9+9 9+9+12 9+9+18
9+12+18 9+12+24 9+18+18
9+18+24 9+9+12+12
12+12+18 18+18+18

4 UNITS

12+12+12 9+12+12+12
12+12+18 9+9+12+24
12+12+24
12+18+18
18+18+18

MODEL TM36H4-O

34 COMBINATIONS

2 UNITS

9+9 12+18
9+12 12+24
9+18 18+18
9+24 18+24
12+12 24+24

3 UNITS

9+9+9 9+12+12
9+9+12 9+12+18
9+9+18 9+18+18
9+9+24 9+18+24
9+12+12 18+18+18

4 UNITS

9+9+9+9 9+9+12+18
9+9+9+12 9+9+18+18
9+9+9+18 9+12+12+12
9+9+9+24 9+12+12+18
9+9+12+12 12+12+12+12

5 UNITS

9+9+9+9+9
9+9+9+9+12

MODEL TM42H3-O & TM42H5-O

57 COMBINATIONS

2 UNITS

9+12 12+24
9+18 18+18
9+24 18+24
12+12 24+24
12+18

3 UNITS

9+12+24 12+12+24
9+18+18 12+18+18
9+18+24 12+18+24
9+24+24 12+24+24
9+12+12 18+18+18
9+12+18 18+18+24

4 UNITS

9+9+9+9 9+9+12+24
9+9+9+12 9+9+18+18
9+9+9+18 12+12+12+12
9+9+9+24 9+12+12+18
9+9+12+12 9+12+12+24
9+9+12+18 12+12+18+18

5 UNITS

9+9+9+9+9 9+9+9+12+18
9+9+9+9+12 9+9+12+18+18
9+9+9+9+18 12+12+12+12
9+9+9+9+24 9+12+12+18
9+9+9+12+12 9+12+12+24
9+9+9+12+18 12+12+12+12

MODEL TM48H2O

90 COMBINATIONS

2 UNITS

9+18 9+9+9
9+24 9+9+12
12+12 9+9+18
12+18 9+9+24
12+24 9+12+12
18+18 9+12+18
18+24 9+12+24
24+24 9+18+18
9+18+24 9+18+24
9+24+24

3 UNITS

12+12+12 9+9+9+9
12+12+18 9+9+12
12+12+24 9+9+18
12+18+18 9+9+24
12+18+24 9+12+12
18+24+24 9+12+18
18+18+18 9+9+12+24
18+18+24 9+9+18+18
24+24+24 9+9+18+24

4 UNITS

9+12+12+12 12+12+12+18
9+12+12+18 12+12+12+24
9+12+12+24 12+12+18+18
9+12+12+18 12+12+18+24
9+12+18+24 12+12+24+24
9+12+18+18 9+12+24+24
9+18+18+18 12+18+18+18
9+18+18+24 12+18+18+24
12+12+12+12 12+12+12+18

5 UNITS

9+9+9+9+9 9+9+12+12+24
9+9+9+9+12 9+9+12+18+18
9+9+9+9+18 9+9+12+18+24
9+9+9+9+24 9+9+12+12+12
9+9+9+12+12 9+12+12+12+18
9+9+9+12+18 9+12+12+24
9+9+9+12+24 9+12+12+18+18
9+9+9+18+18 12+12+12+12+12
9+9+9+18+24 12+12+12+12+18
9+9+12+12+12 12+12+12+24
9+9+12+12+18 12+12+18+18

6 UNITS

9+9+9+9+9+9 9+9+9+12+12+12
9+9+9+9+9+12 9+9+9+12+18+18
9+9+9+9+9+18 9+9+9+12+18+24
9+9+9+9+9+24 9+9+12+12+12
9+9+9+9+12+12 9+12+12+12+18
9+9+9+9+12+18 9+9+9+12+18+18
9+9+9+9+12+24 9+9+12+12+12+12
9+9+9+12+12+12 9+9+9+12+12+18
9+9+9+12+12+18 9+9+12+12+12+12
9+9+9+12+12+18 12+12+12+12+12

9+9+9+9+9+9+9
9+9+9+9+9+9+12
9+9+9+9+9+9+18
9+9+9+9+9+9+24
9+9+9+9+12+12
9+9+9+9+12+18
9+9+9+9+12+18+18
9+9+9+9+12+18+24
9+9+9+12+12+12
9+9+9+12+12+18
9+9+9+12+12+18+18
9+9+9+12+12+12+12
9+9+9+12+12+12+18
9+9+9+12+12+12+18
9+9+9+12+12+12+12+12

MODEL TM56H2O

131 COMBINATIONS

2		3 UNITS		4 UNITS		5 UNITS		6 UNITS	
9+18	9+9+12	9+18+24	12+18+24	9+9+9+9	9+9+18+24	9+18+18+18	12+12+18+24	9+9+9+9+9	9+9+9+12+18
9+24	9+9+18	9+24+24	12+24+24	9+9+9+12	9+9+24+24	9+18+18+24	12+12+24+24	9+9+9+9+12	9+9+12+18+24
12+18	9+9+24	12+12+12	18+18+18	9+9+9+18	9+12+12+12	9+18+24+24	12+18+18+18	9+9+9+9+18	9+9+12+24+24
12+24	9+12+12	12+12+18	12+18+24	9+9+9+24	9+12+12+18	9+24+24+24	12+18+18+24	9+9+9+9+24	9+9+12+12+12
18+18	9+12+18	12+12+24	18+24+24	9+9+12+12	9+12+12+24	12+12+12+12	12+18+24+24	9+9+9+9+12+12	9+9+12+12+18
18+24	9+12+24	12+18+18	24+24+24	9+9+12+18	9+12+18+18	12+12+12+18	18+18+18+18	9+9+9+9+12+18	9+9+12+12+12+12
24+24	9+18+18	9+18+24		9+9+12+24	9+12+18+24	12+12+12+24	18+18+18+24	9+9+9+9+12+24	9+9+12+12+12+12
		9+24+24		9+9+18+18	9+12+24+24	12+12+18+18		9+9+9+9+12+24	

MODEL TM56H2O

7 UNITS		8 UNITS		9 UNITS	
9+9+9+9+9+9+9	9+9+9+9+9+12+18	9+9+9+12+12+12+12	9+9+9+9+9+9+9+9	9+9+9+9+9+9+9+9	
9+9+9+9+9+9+12	9+9+9+9+9+12+24	9+9+9+12+12+12+18	9+9+9+9+9+9+9+12		
9+9+9+9+9+9+18	9+9+9+9+9+18+18	9+9+12+12+12+12+12	9+9+9+9+9+9+9+18		
9+9+9+9+9+9+24	9+9+9+9+12+12+12	9+12+12+12+12+12+12	9+9+9+9+9+9+12+12		
9+9+9+9+9+12+12	9+9+9+9+12+12+18		9+9+9+9+9+12+12+12		

18-16 SEER LIGHT COMMERCIAL

18 000 BTU TO 48 000 BTU

1-to-1 COMMERCIAL
INVERTER SERIES
HEAT PUMPS

OUTDOOR
UNITS

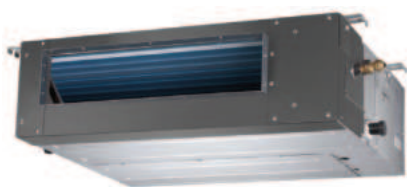


Reliable, efficient, sophisticated and powerful are the words that best describe the **LIGHT COMMERCIAL** series. The Light Commercial series is a very quiet, BMS capable, inverter driven mini-split using R410A refrigerant that is engineered to provide heat even at $-20^{\circ}\text{C}/-4^{\circ}\text{F}$. The variety of indoor units will help you with any type of commercial applications, we have cassettes, slim-ducts or floor-ceiling units to cool or heat your environment. If you are looking for technology, comfort, reliability and an efficient auxiliary source of heating, the LIGHT COMMERCIAL series is for you.

- › Heating down to $-20^{\circ}\text{C}/-4^{\circ}\text{F}$
- › Built-In Drain Pan Heater

- › Cassette – Slim-duct – Floor-ceiling
- › BMS capable
- › LED display

INDOOR
UNITS



INDOOR UNITS

1-to-1 COMMERCIAL INVERTER SERIES HEAT PUMPS

3-DIMENSIONAL BLADE FOR QUIET OPERATION **CASSETTE TYPE**



THERMOSTAT
(Optional)
XK60



**YOUR TRUSTED
COMPANION**

- > Wireless remote included
- > Internal condensate pump
- > Fresh air intake

MODEL			18	24	30	36	42	48
Capacity	Cooling	BTU/h	17,100 (5,400-18,700)	23,800 (8,200-29,000)	28,200 (8,800-31,400)	34,000 (10,800-39,000)	39,500 (11,000-41,000)	48,000 (20,400-50,500)
	Heating	BTU/h	18,400 (4,700-22,200)	27,200 (8,200-32,400)	31,200 (8,200-33,600)	41,000 (9,800-49,500)	44,000 (12,000-51,000)	54,500 (17,500-61,500)
SEER/HSPF			16.00/9.50	16.00/9.00	17.00/9.00	16.00/9.00	16.00/9.00	16.00/9.00
Power Supply		V/ph/hz	208-230/1/60	208-230/1/60	208-230/1/60	208-230/1/60	208-230/1/60	208-230/1/60
Rated Current	Cooling	A	12.79	19.44	19.95	23.79	24.30	34.27
	Heating	A	12.28	20.46	20.97	24.30	25.06	33.25
Refrigerant charge		Oz	43.5	77.6	84.7	123.5	130.5	141.1
COP		W/W	3.00	3.39	3.68	3.20	2.92	3.3
Dehumidification		l/h	0.85	1.14	1.42	1.61	1.75	2.13
INDOOR UNIT			TU18HK-I	TU24HK-I	TU30HK-I	TU36HK-I	TU42HK-I	TU48HK-I
Airflow		PCM/CFM	445	765	880	1,095	1,095	1,350
Sound Pressure Level (L/H)		dB(a)	37/47	38/47	40/49	43/51	43/51	41/53
Body Dimensions (W x H x D)	Outline	in.	26.2x9.4x23.5	36.1x9.4x33.1	36.1x12.6x33.1	36.1x12.6x33.1	36.1x12.6x33.1	36.8x11.4x35.8
Body Weight	Net/Gross	lb	44.1/49	59.5/63	70.6/74	70.6/74	70.6/74	94.8/97
Panel Dimensions (W x H x D)	Outline	in.	26.4x2.0x26.4	37.5x2.4x37.5	37.5x2.4x37.5	37.5x2.4x37.5	37.5x2.4x37.5	40.9x2.6x40.9
Panel Weight	Net/gross	lb	7.7/11.0	15.4/24.3	15.4/24.3	15.4/24.3	15.4/24.3	17.6/26.5
OUTDOOR UNIT			TU18H3-O	TU24H3-O	TU30H3-O	TU36H3-O	TU42H3-O	TU48H3-O
Sound Pressure level		dB(a)	56	57	58	63	61	59
Dimensions (W x H x D)	Outline	in.	37.6x27.6x15.6	38.6x31.1x16.8	38.6x31.1x16.8	43.6x43.3x17.3	37.7x53.1x16.2	37.7x53.1x16.2
Weight	Net/Gross	lb	105.8/114.7	152.1/163.2	158.8/168.8	205.1/222.7	209.5/231.5	231.5/253.6
Connection pipe diameter	Liquid	in.	1/4	3/8	3/8	3/8	3/8	3/8
	Gas	in.	1/2	5/8	5/8	5/8	5/8	5/8
Max. Pipe Length		ft.	65.6	98.4	98.4	98.4	164	164
Max. Elevation		ft.	49.2	49.2	49.2	49.2	98.4	98.4
MOCP		A	25	40	40	45	50	70

HIGHLY FLEXIBLE
INSTALLATION
DUCT TYPE

1-to-1 COMMERCIAL
INVERTER SERIES
HEAT PUMPS

INDOOR
UNITS



**THERMOSTAT
XK60**



- > Wall thermostat included
- > Wireless remote included

MODEL			18	24	30	36	42	48
Capacity	Cooling	BTU/h	17,100 (5,400-19,800)	23,800 (7,400-29,000)	28,200 (8,200-29,600)	34,000 (10,800-39,000)	39,500 (12,000-42,500)	48,000 (20,400-49,500)
	Heating	BTU/h	18,800 (4,700-23,200)	27,200 (8,200-32,400)	31,200 (8,200-33,600)	41,000 (9,800-49,500)	44,000 (13,000-52,500)	54,500 (17,500-58,000)
SEER/HSPF			16.00/9.50	16.00/9.00	16.00/9.00	16.00/9.00	16.00/9.00	16.00/9.00
Power Supply		V/ph/hz	208-230/1/60	208-230/1/60	208-230/1/60	208-230/1/60	208-230/1/60	208-230/1/60
Rated Current	Cooling	A	12.79	19.44	19.95	23.79	24.55	34.27
	Heating	A	12.28	20.46	20.97	24.30	24.81	34.27
Refrigerant charge		Oz	49.4	77.6	84.7	123.5	130.5	141.1
COP		W/W	3.33	3.39	2.97	3.20	3.33	3.11
Dehumidification		l/h	1.4	1.9	2.2	2.7	3.0	3.8
INDOOR UNIT			TU18HF-I	TU24HF-I	TU30HF-I	TU36HF-I	TU42HF-I	TU48HF-I
Airflow		PCM/CFM	585	820	820	1,175	1,175	1,470
ESP		in. WG	0.12	0.3	0.3	0.4	0.4	0.5
Sound Pressure Level (L/H)		dB(a)	28/40	40/47	40/47	44/53	44/53	45/55
Dimensions (W x H x D)	Outline	in.	40.8x10.5x28.4	50.4x10.6x22.0	50.4x10.6x22.0	48.3x11.4x30.5	48.3x11.4x30.5	52.8x13.8x29.5
Weight	Net/Gross	lb	72.8/83.8	75.0/86.0	77.2/86.0	101.4/116.9	101.4/116.9	123.5/143.3
OUTDOOR UNIT			TU18H3-O	TU24H3-O	TU30H3-O	TU36H3-O	TU42H3-O	TU48H3-O
Sound Pressure level		dB(a)	56	57	58	63	61	59
Dimensions (W x H x D)	Outline	in.	37.6x27.6x15.6	38.6x31.1x16.8	38.6x31.1x16.8	43.6x43.3x17.3	37.7x53.1x16.2	37.7x53.1x16.2
Weight	Net/Gross	lb	105.8/114.7	152.1/163.2	158.8/168.8	205.1/222.7	209.5/231.5	231.5/253.6
Connection pipe diameter	Liquid	in.	1/4	3/8	3/8	3/8	3/8	3/8
	Gas	in.	1/2	5/8	5/8	5/8	5/8	5/8
Max. Pipe Length		ft.	65.6	98.4	98.4	98.4	164	164
Max. Elevation		ft.	49.2	49.2	49.2	49.2	98.4	98.4
MOCP		A	25	40	40	45	50	70

INDOOR UNITS

1-to-1 COMMERCIAL INVERTER SERIES HEAT PUMPS

COMPACT DESIGN FLOOR-CEILING TYPE



THERMOSTAT
(Optional)
XK60



› Wall thermostat included

MODEL			18	24	30	36	42	48
Capacity	Cooling	BTU/h	17,100 (5,400-19,800)	23,800 (8,200-27,800)	28,200 (8,800-31,400)	34,000 (10,800-39,000)	39,500 (12,000-42,500)	48,000 (20,400-50,500)
	Heating	BTU/h	19,100 (4,700-23,200)	27,200 (8,200-30,600)	31,200 (8,200-33,600)	41,000 (9,800-49,500)	44,000 (13,000-52,500)	54,500 (17,500-61,500)
SEER/HSPF			17.00/9.50	16.00/9.00	17.00/9.00	16.00/9.00	16.00/9.00	16.00/9.00
Power Supply		V/ph/hz	208-230/1/60	208-230/1/60	208-230/1/60	208-230/1/60	208-230/1/60	208-230/1/60
Rated Current	Cooling	A	12.79	19.44	19.95	23.79	24.55	34.27
	Heating	A	12.28	20.46	20.97	24.30	24.81	34.27
Refrigerant charge		Oz	49.4	77.6	84.7	123.4	130.5	141.1
COP		W/W	3.61	3.39	3.54	3.20	3.21	3.48
Dehumidification		l/h	0.76	0.99	1.23	1.51	1.61	1.99
INDOOR UNIT			TU18HT-I	TU24HT-I	TU30HT-I	TU36HT-I	TU42HT-I	TU48HT-I
Airflow		PCM/CFM	585	705	880	1,115	1,115	1,350
Sound Pressure Level (L/H)		dB(a)	32/44	40/49	38/49	46/54	47/55	46/56
Dimensions (W x H x D)	Outline	in.	48.0x27.6x8.9	48.0x27.6x8.9	55.9x27.6x9.6	55.9x27.6x9.6	55.9x27.6x9.6	66.9x27.6x9.6
Weight	Net/Gross	lb	86.0/105.8	88.2/110.3	105.8/123.5	105.8/123.5	110.3/127.9	130.1/149.9
OUTDOOR UNIT			TU18H3-O	TU24H3-O	TU30H3-O	TU36H3-O	TU42H3-O	TU48H3-O
Sound Pressure level		dB(a)	56	57	58	63	61	59
Dimensions (W x H x D)	Outline	in.	37.6x27.6x15.6	38.6x31.1x16.8	38.6x31.1x16.8	43.6x43.3x17.3	37.7x53.1x16.2	37.7x53.1x16.2
Weight	Net/Gross	lb	105.8/114.7	152.1/163.2	158.8/168.8	205.1/222.7	209.5/231.5	231.5/253.6
Connection pipe diameter	Liquid	in.	1/4	3/8	3/8	3/8	3/8	3/8
	Gas	in.	1/2	5/8	5/8	5/8	5/8	5/8
Max. Pipe Length		ft.	65.6	98.4	98.4	98.4	164	164
Max. Elevation		ft.	49.2	49.2	49.2	49.2	98.4	98.4
MOCP		A	25	40	40	45	50	70

PORTABLE AIR CONDITIONER



GPC06AK-A3NNA2B

10,000 BTU
115V • 60HZ • 1PH

DEHUMIDIFIER



TIMER INCLUDED: EE:2
TANK: 7.61 L



GDN50BA-A3EBA2B

50 PINT/D
115V • 60HZ • 1PH

GLOSSARY

AIRFLOW

A measure of the amount of air per unit of time that passes through the device. It is measured in CFM (cubic feet per minute).

COP

Stands for Coefficient of Performance. It is the ratio between the cooling or heating provided and the electrical power consumption.

EER

Stands for Energy Efficiency Rating. It measures the ratio of output power to the input power.

REFRIGERANT

A refrigerant is the substance used to "move" the heat outside (or inside) of the room where the device is. We use the refrigerant R-410A as it is environmentally friendly and allows for the design of smaller and more efficient systems compared to R-22.

BTU/h

BTU is the British thermal unit. It is the amount of energy needed to cool or heat 1 pound of water by 1° F. The BTU/h is the unit of power used in HVAC. It corresponds to approximately 0.29 Watt.

DEHUMIDIFICATION

A measure of the amount of water per unit of time that the device is able to extract from the ambient air. It is measured in litres per hour.

HSPF

Stands for Heating Seasonal Performance Factor. It is the ratio between the seasonal heating output and the electricity used.

SEER

Stands for Seasonal Energy Efficiency Ratio. It is the ratio between the seasonal cooling output and the electricity used.

SOUND PRESSURE LEVEL

Sound Pressure is the force of a sound on a surface perpendicular to its direction. It is measured in Pa (Pascal). The lowest sound pressure that can be heard is 2x10 Pa. The Sound Pressure Level is a comparison of the measured sound to the lowest sound pressure hearable. The units are expressed in terms of dB (decibel) which is not linear, that is, if the pressure is Doubled, the Sound Pressure Level increases by 6dB. For example, the lowest hearable sound is 0dB while a quiet room is 40dB.



YOUR TRUSTED
COMPANION

TOSOT



TOSOTAMERICA.COM